

# Quick Start Guide - DTChart

## Menus

### File

**Open** - Opens previously recorded data files for viewing and measurement using the cursor controls.

### Settings

**Acquisition Configurations** - Set the Sampling Rate and Voltage Range.

Edit the Engineering Units, Channel Name, Scale, Offset, Gain, Range and Plot Colours for each channel.

Hint: These settings enable your sensor data to be converted and displayed in physical units other than volts.

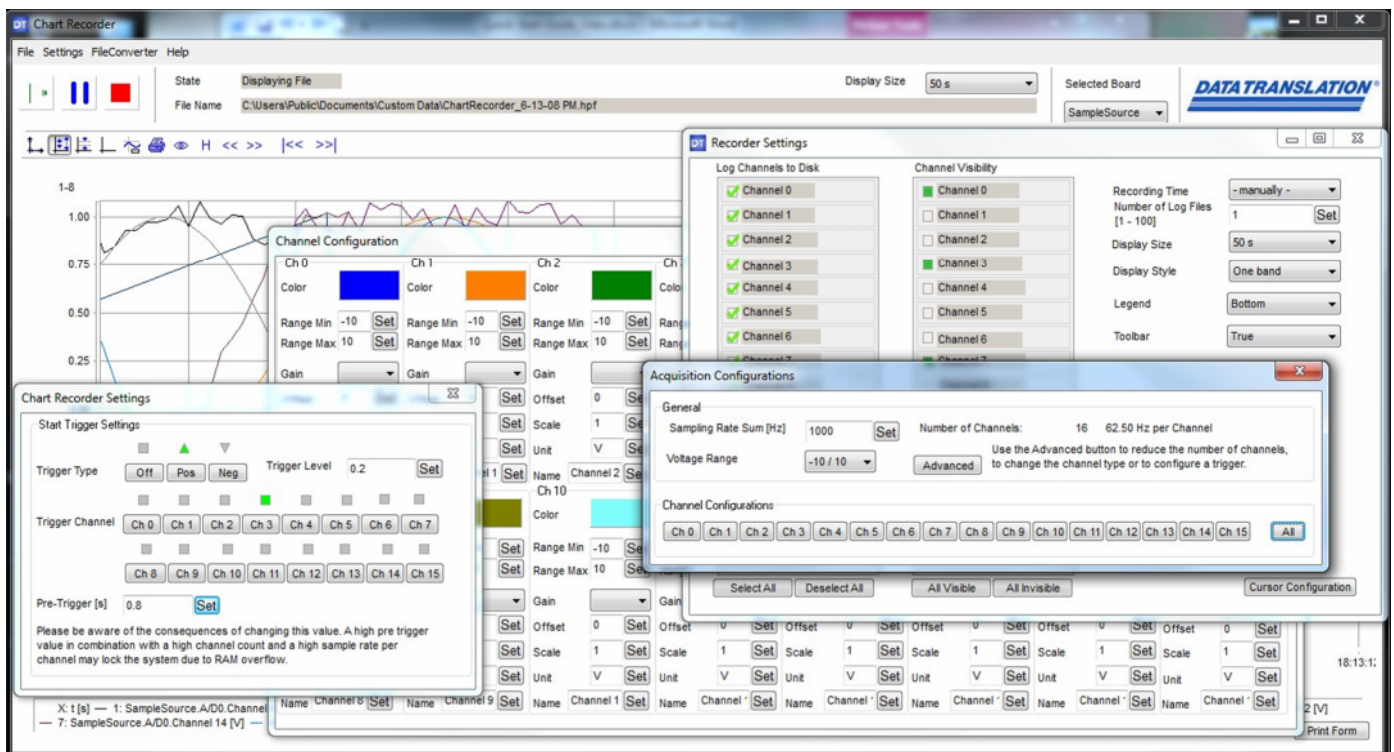
**Chart Recorder Settings** - Selectively enable or disable channels to be recorded and plotted.

Set Recording Time and number of log files.

Display settings for Time Axis, Single or Multiple plot bands, Legend Positions and Toolbar visibility

Set the Cursor resolution.

**Trigger Settings** – Select channel, Positive or Negative trigger, trigger threshold, Pre-trigger period.



## Settings Forms for Acquisition, Chart Recorder and Triggers

**Load Configuration File** – Load saved recording configuration.

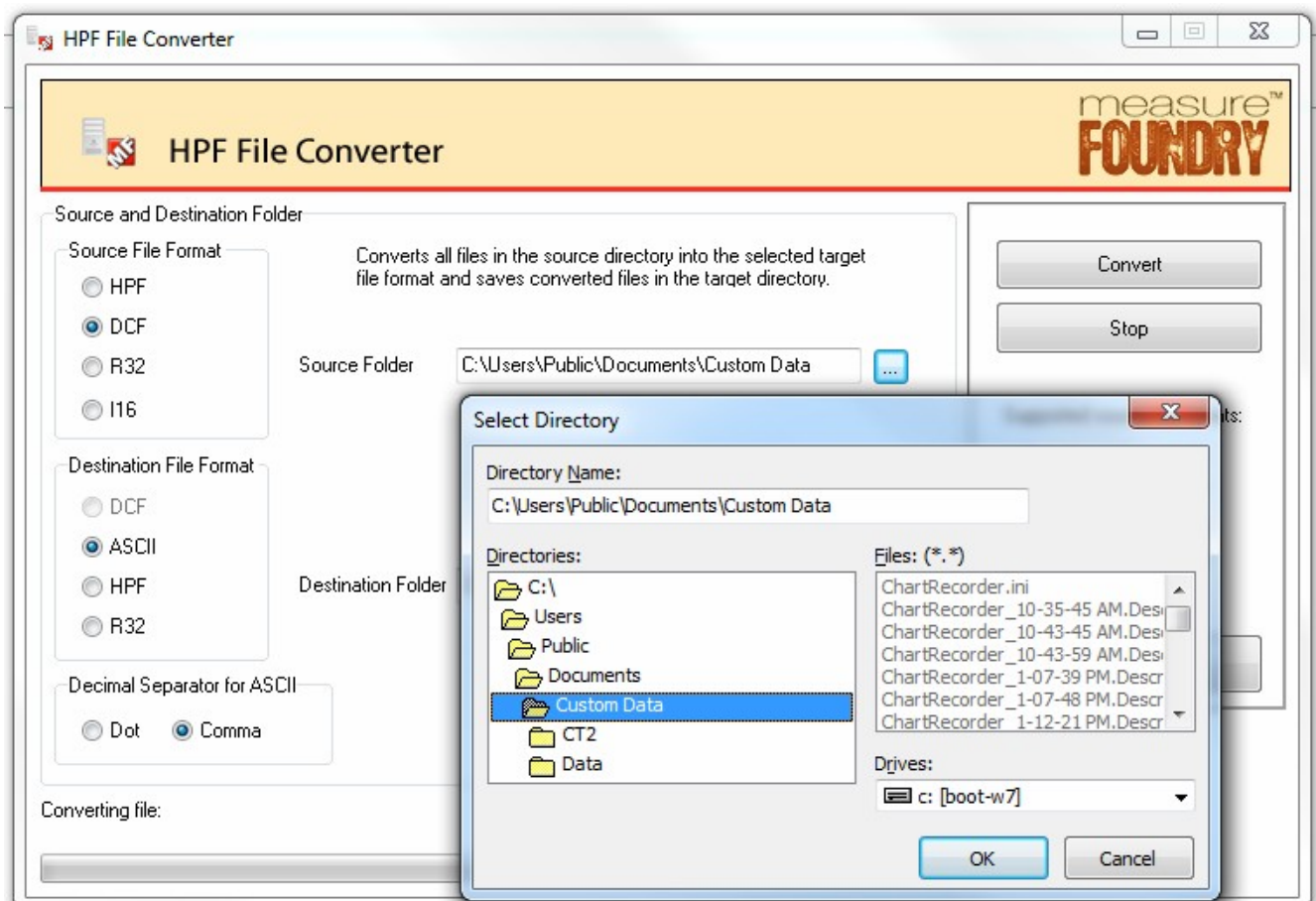
**Save Configuration File** – Save acquisition settings from current set up.

**Align Forms Left** – Aligns all open forms to left of screen.

**FileConverter** – Opens file converter utility to convert recorded data files to DCF, HPF, R32 or ASCII (import to Excel for example) formats. The Path to source and destination folders can be selected.

### **File Converter Step by Step**

1. Select the Source File Format. Normally .hpf
2. Select the Source Folder in which the data files are recorded.  
*The recorded files should now be visible as shown below*
3. Similarly select the Destination Folder where you want to find the converted files.
4. Select the Destination File Format.  
*ASCII if you want to import to Excel for example, for ASCII the column delimiter would normally be Comma*
5. Click Convert and all files in the Source Folder should be converted to the required file format in the Destination Folder.
6. The files can then be opened in your analysis program. (Excel for example).



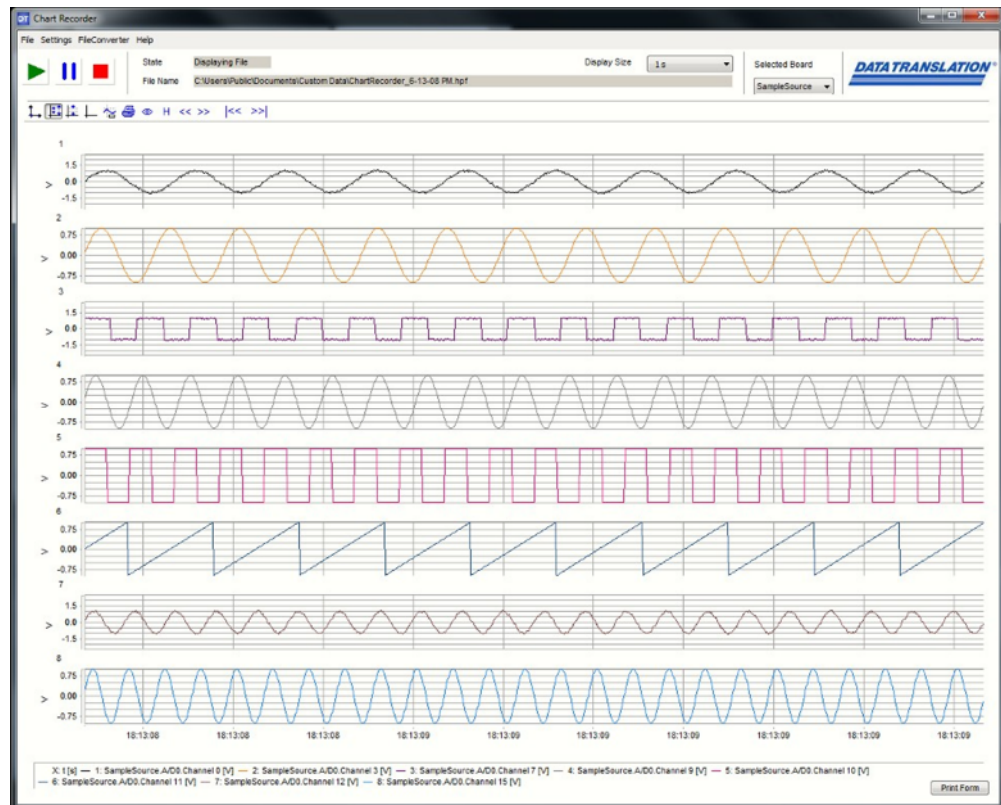
### **Help**

**About** – Program version

**Feedback** – Software Feedback

# Chart Recorder Form

Menu Bar  
Control and Status Bar  
Chart Controls  
Channel Bands



Time Axis  
Chart Legends

## Menu Bar

Form main menus

## Control and Status Bar

Recording Controls – Start, Pause, Stop  
Display Status  
File Path  
Display Size (1s to 24Hour)  
Currently selected data acquisition module

## Chart Controls

Setup Y axis display scales for each channel band  
Autoscale button  
Capture scale button  
Default scale button  
Cursor panel button – sets cursor positions for 2 measurement cursors. View saved file only.  
Print chart button – prints plot to a selected printer device  
Change number of displayed channels  
Hold display  
Scroll display. View saved file only

## Channel Bands

Displays waveforms separately or combined with vertical axis scales.

## Time Axis

Horizontal time axis. Timescale defined in the Control and Status Bar or in the Chart Recording Settings form.

## Chart Legends

Channel names – position and visibility set on the Chart Recorder Settings form.  
Print Form – prints plot to default device